

Migrating Print Servers using Microsoft's Print Migrator

Introduction:

Occasionally the need arises to move or change print servers. This task can be daunting, especially in the case of hundreds, or even thousands of printers. In this article we will provide an example of migrating all printers, shares and permissions from Server 2003 R2, to Server 2008 using a free Microsoft utility named Print Migrator.

Did you know?

Print Migrator can also be used for the backup and restore of Print Servers. Use this to make a simple backup prior to a major printer or driver change for peace of mind.

Obtaining Print Migrator:

Print Migrator 3.1 is a free utility that is available via the Microsoft Download center. Support is limited, and the tool is officially support only on Windows NT, 2000, XP and 2003 Systems. However it typically performs well and without issue on newer operating systems such as Server 2008.

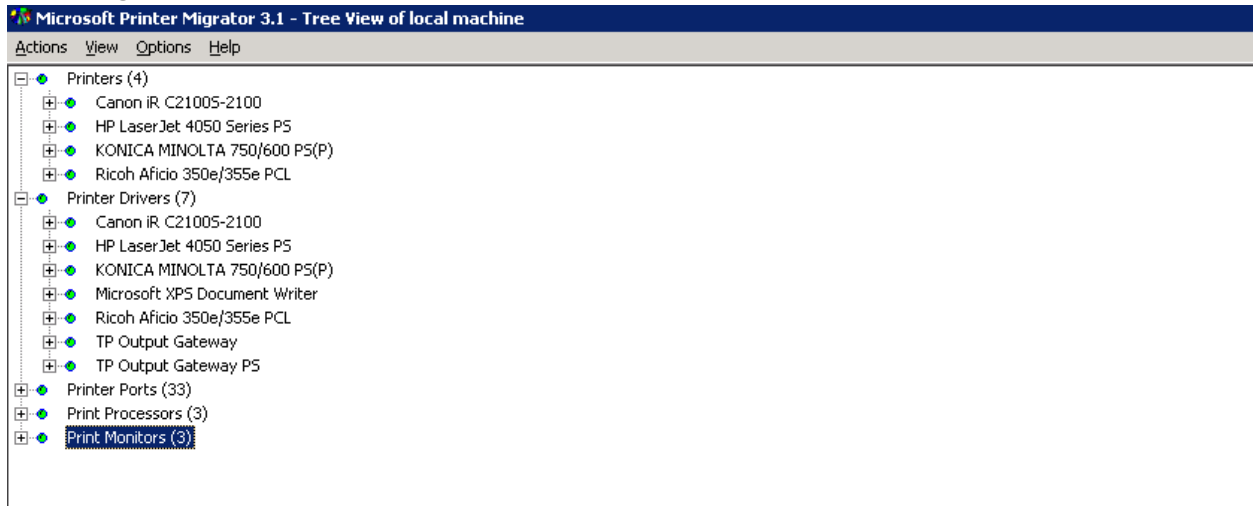
<http://www.microsoft.com/download/en/details.aspx?id=25311>

Introduction to Print Migrator 3.1:

Upon downloading and launching Print Migrator, you will see a simple view broken into several categories. These are:

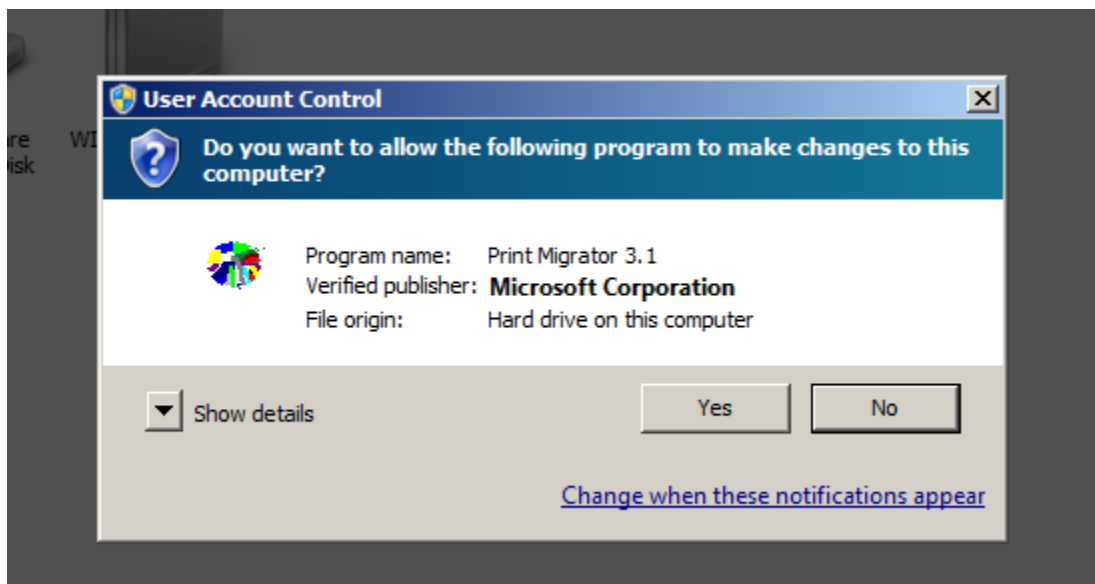
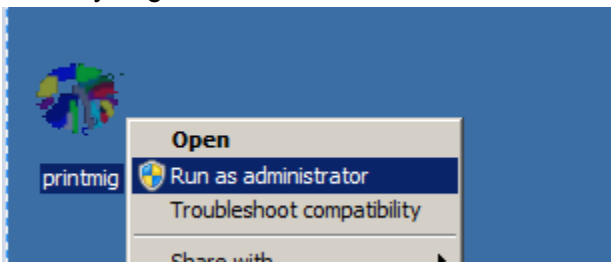
- **Printers:**
Lists all currently installed printers.
- **Printer Drivers:**
Lists all of the drivers currently installed on the server. This includes drivers in use, and typically past drivers that may no longer be actively in use.
- **Printer Ports:**
This is a list of the ports used by various printers, such as LPT, TCP/IP and other ports.
- **Print Processors:**
A list of the print processors installed. Print processors help tell the spooler how to alter the job and spool the file as what data type.
- **Print Monitors:**
The monitors installed and in use on the system. These control and/or monitor the flow of data stream from the spooler, to the actual print device.

Print Migrator Interface:



Running Print Migrator on Windows Vista / 7 / 2008 / 2008 R2:

It is important to ensure that Print Migrator is explicitly run as an Administrator. When launching it, always right click and choose "Run As Administrator"

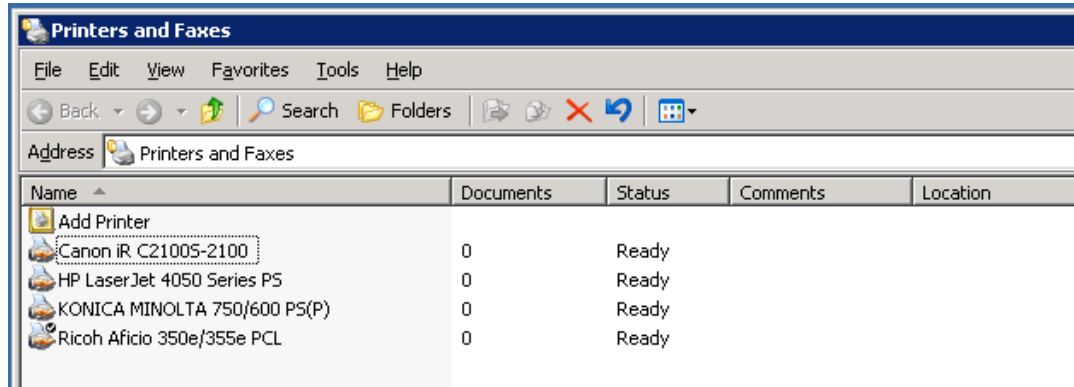


Creating the backup on the Initial Server:

The first step in moving your print queues and their shares from one server to another, is performing a backup.

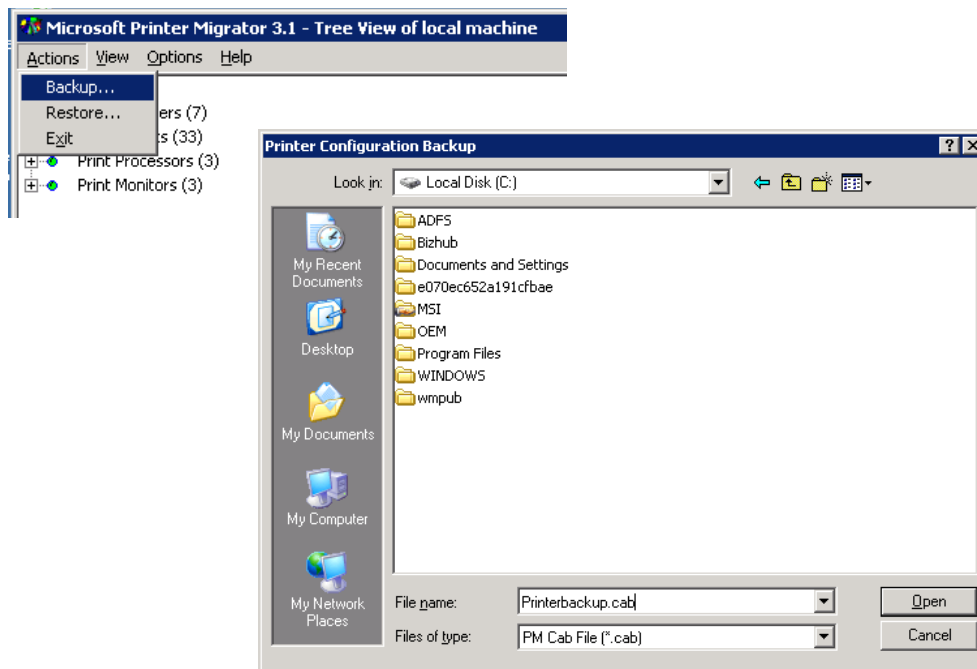
1. Review the printers installed:

Prior to migrating, or backing up is a great time to stroll through your printers and do some cleanup of any unneeded queues. For article simplicity we only have four print queues installed and shared on our Print Server.



2. Create the Backup File:

Within the **[Actions]** menu choose the **[Backup]** option. From there choose **[Backup]**. Choose a file name and location for your new Print Migrator backup Cabinet file.

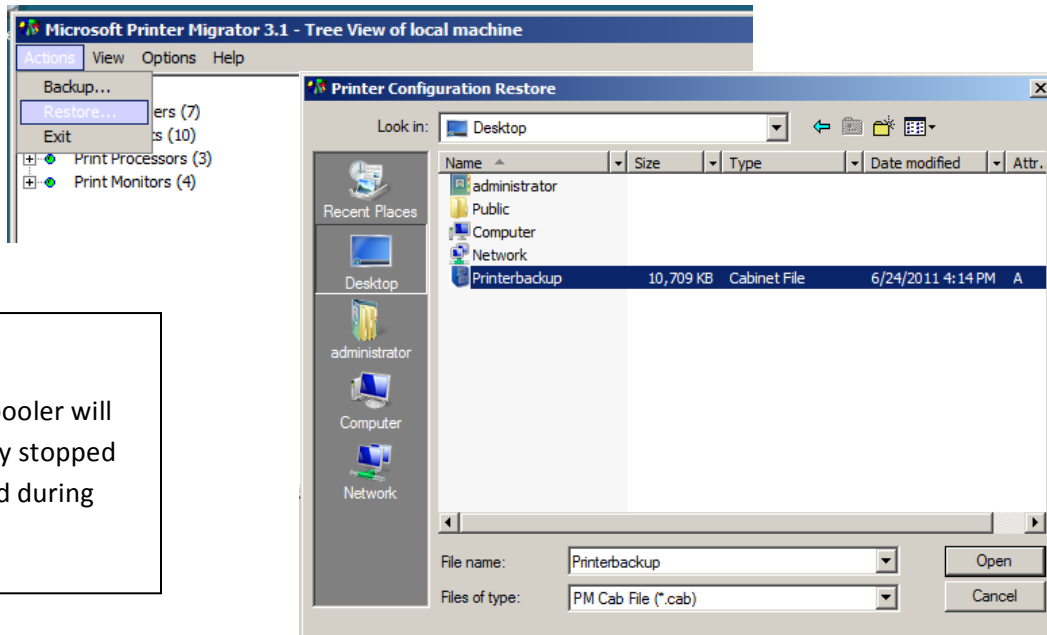


Restore the backup on the new Server:

Once the backup has been made, it is recommended to move that backup file local to the new server, and follow these steps to restore it.

1. Launch Print Migrator and Restore:

Within the **[Actions]** menu choose **[Restore]**. Browse to and choose the backup file made in the previous section.

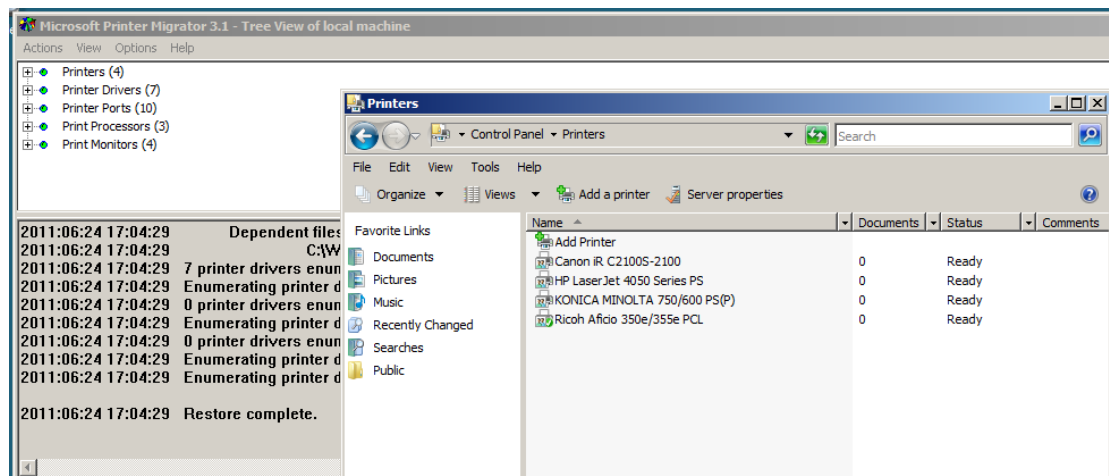


Warning:

Your print spooler will be temporarily stopped and restarted during this process.

2. Verify Printers and Shares:

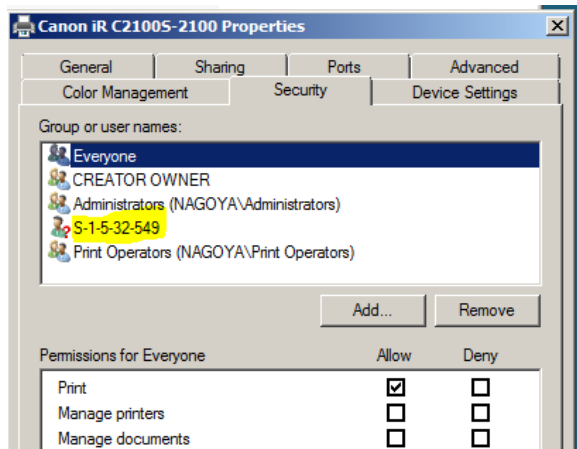
Once the restore process has completed, you should ensure all printers and shares seem to be properly in place.



Considerations when Changing Domains:

If your old print server and new print server are not in the same domain, then print permissions will not be carried over, or “interpreted” by the target server in any way.

You will see domain groups from the old domain, listed as just their Security Identifier (SID) and those permissions will not apply.



Considerations when changing Server Architectures:

Changing server architectures is not supported by the current version of Print Migrator and is beyond the scope of this article.

Example:

Moving from a Server 2003 32 bit to Server 2008 R2 64 bit is not supported.